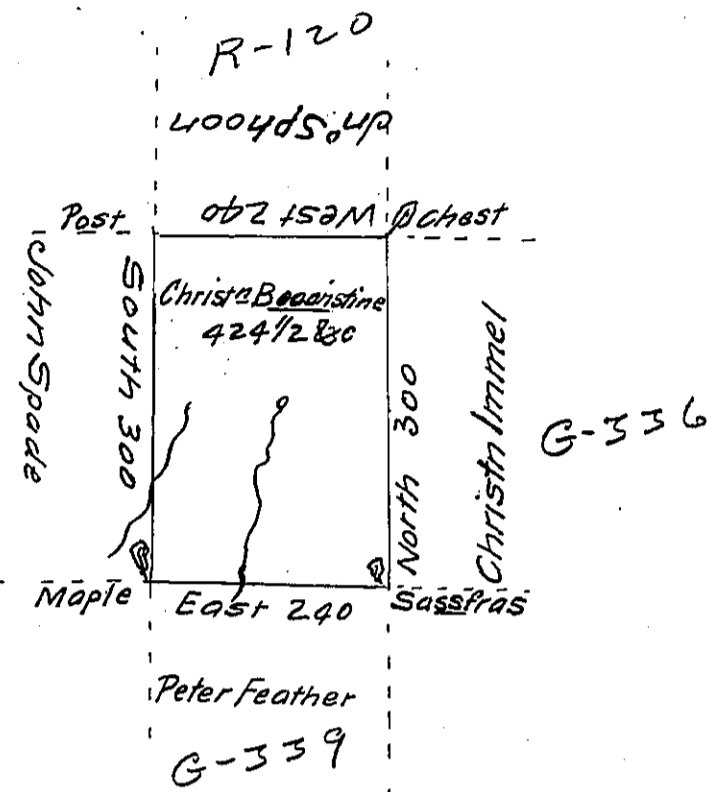


X



A Draft of a tract of Land called _____ situate in the County
of Luzerne containing Four hundred and twenty four acres $\frac{1}{2}$
and allowance. Surveyed for Christⁿ Bernstine the 20th day of
August 1793 by virtue of a warrant dated the 9th day of January 1793
To Daniel Brodhead Esq^r } by W^m Gray D.S.
Surv^r Gen^l }

IN TESTIMONY that the above is a copy of the original remaining on file in
the Department of Internal Affairs of Pennsylvania, made
conformably to an Act of Assembly approved the 16th day of
February, 1833, I have hereunto set my Hand and caused
the Seal of said Department to be affixed at Harrisburg,
this eleventh day of July 1911

Henry Howell
Secretary of Internal Affairs.